

Integrating Sound Level Meter

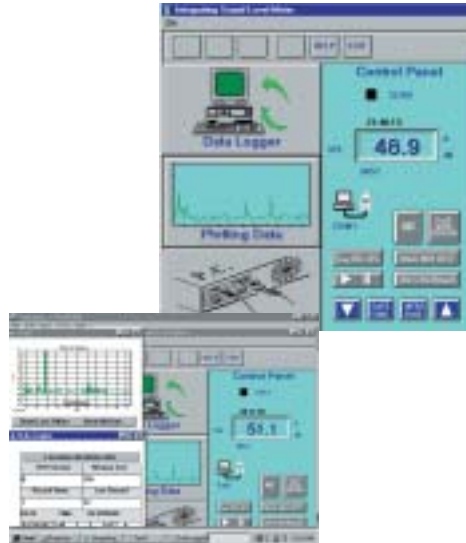
Leq and SEL measurements with built-in datalogger and PC interface

Features:

- 4 Digit multifunction LCD with analog bargraph
- Precise linearity over wide range (100dB)
- Display modes: SPL, SEL, MAX-L/MIN-L, and Leq
- Programmable integrating time
- A and C Frequency weighting
- Impulse/Fast/Slow response settings
- Datalogging function records up to 32,000 records
- Real time calendar/clock
- Built-in RS-232 interface with included Windows® datalogging software
- Tripod mount
- Meets IEC 651/804 Type 2 and ANSI S1.4 Type 2 specifications
- Complete with wind shield, adjustment screwdriver, RS-232 cable, 9 to 25 pin gender changer, Windows™ software, battery, and case

Applications:

- Perform Leq and SEL measurements
- OSHA compliance Testing
- Noise Ordinance
- Machine Noise Evaluation
- Data Storage for pertinent records



CE

Specifications :	
Applicable Standards:	IEC 651 And 804 Type 2, ANSI S1.4 Type 2
Accuracy:	±1.5dB (ref 94dB@1KHz)
Resolution:	0.1dB
Digital Display:	4 digital LCD
Measurement Parameters:	SPL, Leq, SEL, MaxL, MinL
Measurement Range:	30dB to 130dB
Linearity Range:	100dB
Measurement Frequency Range:	31.5Hz to 8KHz
Frequency Weighting:	A and C
Response:	Impulse, Fast and Slow
Microphone:	1/2" Electret condenser microphone
Sampling time:	updated every 0.5s
Bargraph:	4dB steps, 100dB range, 100ms update
Display Warning Function	
Overrange Indicator	Displayed at the upper limit
Underrange Indicator	Displayed at the lower limit
Analog AC/DC Output:	2Vrms (at full scale), 10mVDC/dB
Power Supply:	Four 1.5V AA batteries, Optional AC adapter
Battery Life:	Approximately 20 hours
Dimensions:	10.4x2.8x0.8" (265x72x21mm)
Weight:	10.9oz (310g)

Ordering Information:

- 407780Sound Level Meter
- 40776994/114 dB Calibrator for 0.5" or 1" microphones.
- 40705XInsulated recorder cable 3' for AC/DC Outputs
- 407764-EXT6' Microphone Extension Cable
- 155117-1117 VAC Adaptor
- 156230220 VAC adaptor

EXTECH INSTRUMENTS CORPORATION
285 Bear Hill Road, Waltham, MA 02451-1064, U.S.A.
Phone: 781-890-7440 • FAX 781-890-7864

ISO 9001:2000 CERTIFIED

Make mine an Extech!
www.extech.com



08/03 - R1